

W 2200-230 9" Angle Grinder #606435420

Die-cast Aluminum Housing
Rotatable 90° for ergonomic
cutting position / vertical grinding



2,200 Watt, 15 Amp Motor
AC/DC Capable



Safety Switch
Prevents unintentional start up

External Carbon Brush Access

**Gear Flange Unified
with MPN LAG**
100% compatibility with
accessories

3-Position Side Handle

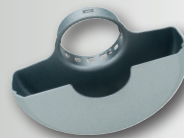
Burst Proof Guard

Model W 2200-230

| | |
|---------------------|-----------|
| Order Number | 600435420 |
| Max. Wheel Diameter | 9" |
| No-load Speed | 6,600 RPM |
| Amps | 15.0 |
| Weight | 12.8 lbs. |
| Cable Length | 13' |
| Spindle Thread | 5/8-11" |



Available Accessories



#630357000
Type 1 Guard



#626752000
Dustless Masonry
Cutting Guard

Available
06.2019



#655154000
Dustless Concrete
Surface Prep Guard



#627360000
MVT Side Handle

Metabo Corporation
Phone: 800-638-2264
Fax: 800-638-2261
info@metabousa.com

Metabo Canada
Phone: 877-638-2261
Fax: 877-638-2269
info@metabo.ca

#19-003

metabo[®]
PROFESSIONAL POWER TOOL SOLUTIONS